

# EVOLUÇÃO DA INSEMINAÇÃO ARTIFICIAL NO BRASIL

## Nacional e Importado - Período de 1984 - 2004



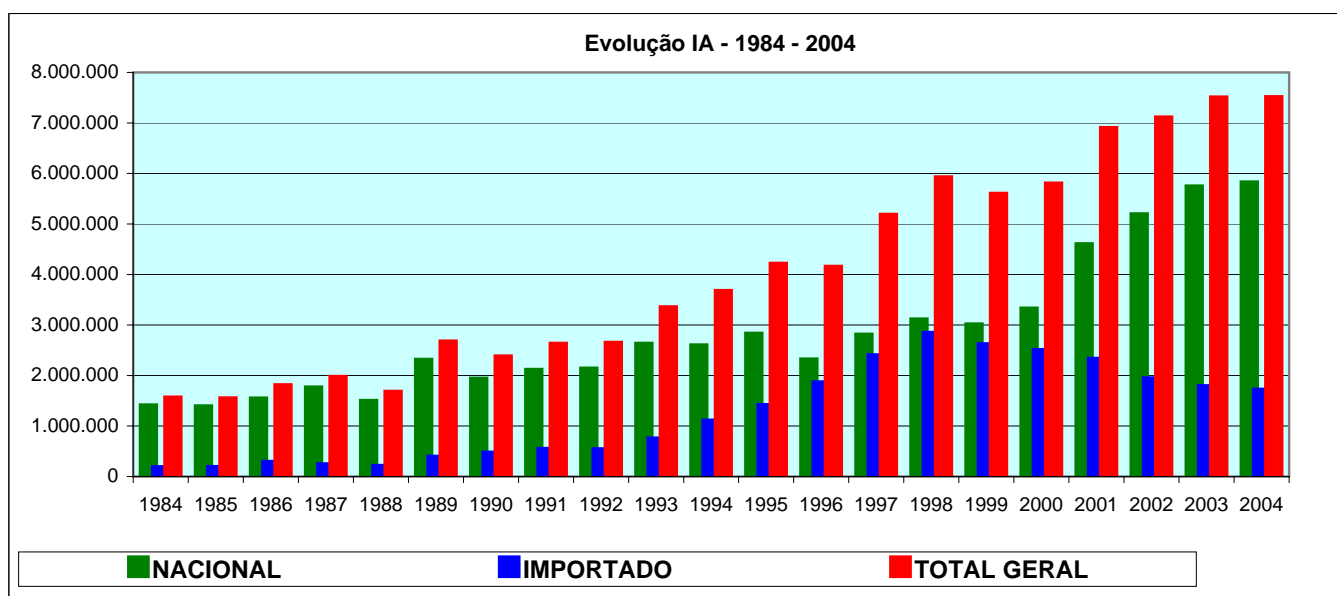
Ano	NACIONAL			IMPORTADO			TOTAL GERAL	
	VENDAS	PART %	EVOL %	VENDAS	PART %	EVOL %	VENDAS	EVOL %
1984	1.377.446	89,84%	34,51%	155.749	10,16%	3,24%	1.533.195	30,50%
1985	1.359.504	89,62%	-1,30%	157.476	10,38%	1,11%	1.516.980	-1,06%
1986	1.515.177	85,30%	11,45%	261.149	14,70%	65,83%	1.776.326	17,10%
1987	1.731.683	89,09%	14,29%	212.032	10,91%	-18,81%	1.943.715	9,42%
1988	1.467.825	89,03%	-15,24%	180.929	10,97%	-14,67%	1.648.754	-15,18%
1989	2.280.054	86,33%	55,34%	361.019	13,67%	99,54%	2.641.073	60,19%
1990	1.906.231	81,15%	-16,40%	442.800	18,85%	22,65%	2.349.031	-11,06%
1991	2.080.086	80,08%	9,12%	517.582	19,92%	16,89%	2.597.668	10,58%
1992	2.108.245	80,55%	1,35%	509.036	19,45%	-1,65%	2.617.281	0,76%
1993	2.597.933	78,21%	23,23%	723.597	21,79%	42,15%	3.321.530	26,91%
1994	2.566.457	70,43%	-1,21%	1.077.431	29,57%	48,90%	3.643.888	9,71%
1995	2.797.063	66,90%	8,99%	1.383.908	33,10%	28,45%	4.180.971	14,74%
1996	2.288.672	55,50%	-18,18%	1.834.770	44,50%	32,58%	4.123.442	-1,38%
1997	2.779.413	53,96%	21,44%	2.371.013	46,04%	29,23%	5.150.426	24,91%
1998	3.079.066	52,26%	10,78%	2.813.309	47,74%	18,65%	5.892.375	14,41%
1999	2.980.091	53,52%	-3,21%	2.588.103	46,48%	-8,01%	5.568.194	-5,50%
2000	3.293.910	57,09%	10,53%	2.475.438	42,91%	-4,35%	5.769.348	3,61%
2001	4.568.962	66,51%	38,71%	2.301.128	33,49%	-7,04%	6.870.090	19,08%
2002	5.161.441	72,94%	12,97%	1.915.120	27,06%	-16,77%	7.076.561	3,01%
2003	5.713.543	76,45%	10,70%	1.759.716	23,55%	-8,11%	7.473.259	5,61%
2004	5.790.315	77,40%	1,34%	1.690.234	22,60%	-3,95%	7.480.549	0,10%

Evolução 00-04

75,79%

-31,72%

29,66%



# EVOLUÇÃO DA INSEMINAÇÃO ARTIFICIAL NO BRASIL

## Corte e Leite - Período de 1995 - 2004



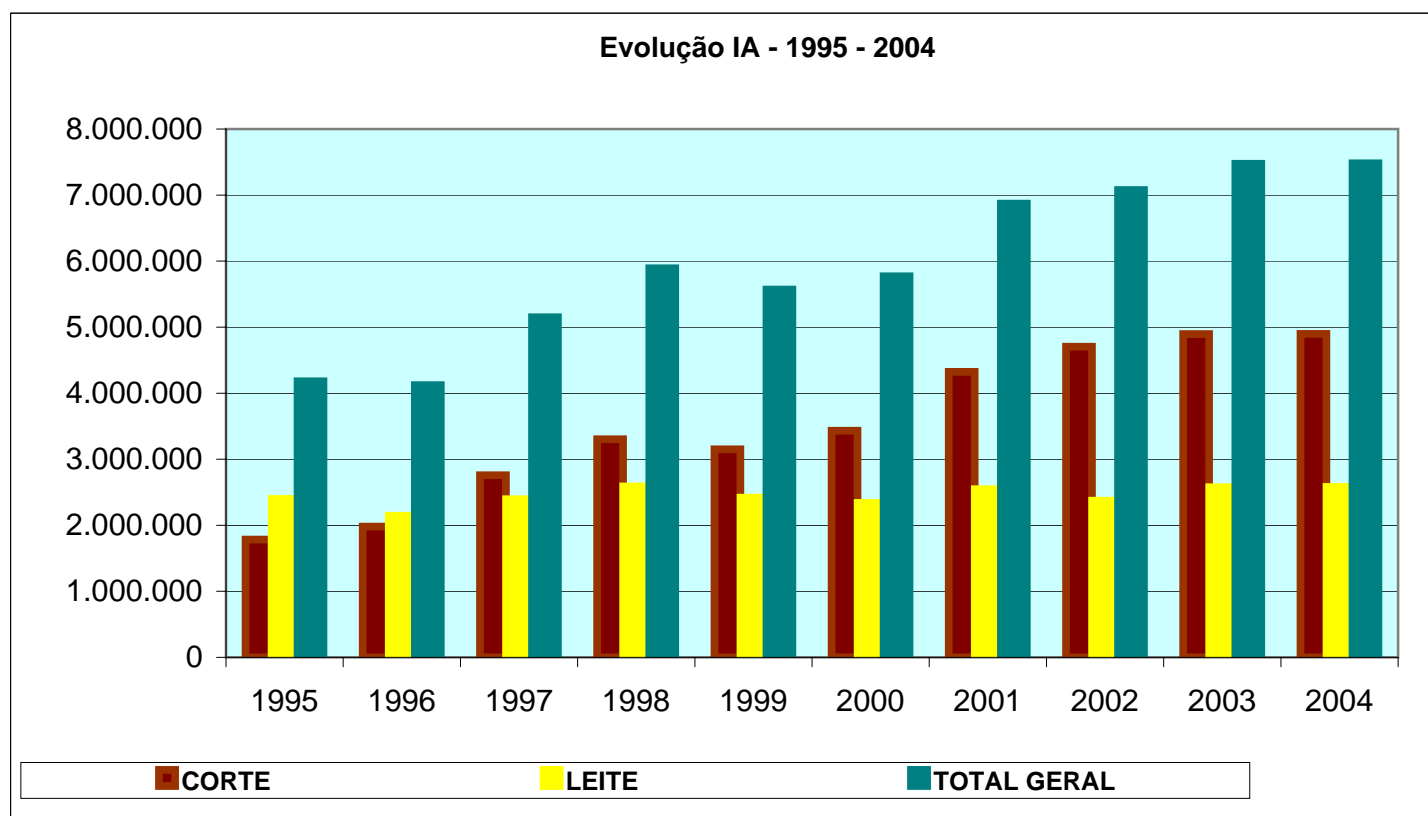
Ano	CORTE			LEITE			TOTAL GERAL	
	VENDAS	PART %	EVOL %	VENDAS	PART %	EVOL %	VENDAS	EVOL %
1995	1.782.658	42,64%		2.398.313	57,36%		4.180.971	
1996	1.979.284	48,00%	11,03%	2.144.158	52,00%	-10,60%	4.123.442	-1,38%
1997	2.757.042	53,53%	39,29%	2.393.384	46,47%	11,62%	5.150.426	24,91%
1998	3.303.281	56,06%	19,81%	2.589.094	43,94%	8,18%	5.892.375	14,41%
1999	3.150.308	56,58%	-4,63%	2.417.886	43,42%	-6,61%	5.568.194	-5,50%
2000	3.431.808	59,48%	8,94%	2.337.540	40,52%	-3,32%	5.769.348	3,61%
2001	4.323.865	62,94%	25,99%	2.546.225	37,06%	8,93%	6.870.090	19,08%
2002	4.704.085	66,47%	8,79%	2.372.476	33,53%	-6,82%	7.076.561	3,01%
2003	4.896.204	65,52%	4,08%	2.577.055	34,48%	8,62%	7.473.259	5,61%
2004	4.898.640	65,49%	0,05%	2.581.909	34,51%	0,19%	7.480.549	0,10%

Evolução 00-04

42,74%

10,45%

29,66%



COMERCIALIZAÇÃO DE SÊMEN 2004

RAÇAS DE CORTE E LEITE - NACIONAL E IMPORTADO



RAÇAS	RAÇAS DE CORTE					
	NACIONAL		IMPORTADO		TOTAL CORTE	
	DOSES	PART %	DOSES	PART %	DOSES	PART %
NELORE - NE	2.716.648	59,27%		0,00%	2.716.648	55,46%
NELORE MOCHO - NO	485.967	10,60%		0,00%	485.967	9,92%
RED ANGUS - AR	267.720	5,84%	78.830	25,02%	346.550	7,07%
ANGUS - AN	105.181	2,29%	98.955	31,40%	204.136	4,17%
BRAHMAN - BR	172.720	3,77%	24.907	7,90%	197.627	4,03%
GUZERÁ - GZ	110.087	2,40%		0,00%	110.087	2,25%
TABAPUÁ - TB	98.797	2,16%		0,00%	98.797	2,02%
SIMENTAL - SM	71.877	1,57%	16.341	5,19%	88.218	1,80%
SENEPOL - SE	75.772	1,65%	7.747	2,46%	83.519	1,70%
BRANGUS - BN	51.694	1,13%	9.606	3,05%	61.300	1,25%
BONSMARA - NS	54.705	1,19%	1.030	0,33%	55.735	1,14%
RED BRANGUS - RB	48.474	1,06%	2.937	0,93%	51.411	1,05%
HEREFORD MOCHO - HP	28.050	0,61%	21.542	6,84%	49.592	1,01%
BRAFORD - BO	40.367	0,88%	6.139	1,95%	46.506	0,95%
COMPOSTO - XX	40.372	0,88%	3.410	1,08%	43.782	0,89%
LIMOUSIN - LM	33.319	0,73%	5.926	1,88%	39.245	0,80%
BRAUNVIEH - BU	29.067	0,63%	2.050	0,65%	31.117	0,64%
CHAROLÉS - CH	14.331	0,31%	16.728	5,31%	31.059	0,63%
CANCHIM - CC	26.811	0,58%		0,00%	26.811	0,55%
CHAROLÉS MOCHO - CO	17.231	0,38%	2.315	0,73%	19.546	0,40%
CARACU - CR	12.652	0,28%		0,00%	12.652	0,26%
MONTANA - MN	12.316	0,27%		0,00%	12.316	0,25%
SIMBRASIL - SI	10.814	0,24%	112	0,04%	10.926	0,22%
MARCHIGIANA - MR	8.759	0,19%		0,00%	8.759	0,18%
PIEMONTÉS - PI	6.128	0,13%	1.191	0,38%	7.319	0,15%
SANTA GERTRUDIS - SG	7.173	0,16%	55	0,02%	7.228	0,15%
BLONDE D'AQUITAINE - BD	4.708	0,10%	1.942	0,62%	6.650	0,14%
HEREFORD - HH	2.660	0,06%	3.731	1,18%	6.391	0,13%
INDUBRASIL - IB	6.286	0,14%		0,00%	6.286	0,13%
DEVON - DE	4.896	0,11%		0,00%	4.896	0,10%
LIMOUSIN MOCHO - LP	4.378	0,10%		0,00%	4.378	0,09%
SIMENTAL MOCHO - SP	3.900			0,00%	3.900	0,08%
GIR MOCHO - GM	3.547	0,08%		0,00%	3.547	0,07%
NORMANDO - NM	90	0,00%	3.074	0,98%	3.164	0,06%
BELGIAN BLUE - BB	1.844	0,04%	730	0,23%	2.574	0,05%
PITANGUEIRAS - PT	2.095	0,05%		0,00%	2.095	0,04%
SENGUS - SN			1.290	0,41%	1.290	0,03%
SHORTHORN - SS		0,00%	1.270	0,40%	1.270	0,03%
MONTBELIARD - MO	85	0,00%	1.085	0,34%	1.170	0,02%
GIR - GY	811	0,02%		0,00%	811	0,02%
AUBRAC - AU		0,00%	577	0,18%	577	0,01%
TARENDAISE - TA			557		557	
PARTHENAISE - PA		0,00%	497	0,16%	497	0,01%
KOBE (WAGYU) - KB	450	0,01%		0,00%	450	0,01%
GELBVIEWH - GV	240	0,01%	150	0,05%	390	0,01%
CHIANGINA - CA	130	0,00%	122	0,04%	252	0,01%
PIRENAICO - PR		0,00%	175	0,06%	175	0,00%
RED POLL - RP	140	0,00%		0,00%	140	0,00%
TULI - TI	140				140	
SANTA GERTRUDIS MOCHO - SO	90	0,00%		0,00%	90	0,00%
GASCONE - GS		0,00%	57	0,02%	57	0,00%
FLAMENGA - FA		0,00%	40	0,01%	40	0,00%
BEEFMASTER - BM		0,00%		0,00%	0	0,00%
BELMONT RED - BT		0,00%		0,00%	0	0,00%
GALLOWAY - GA		0,00%		0,00%	0	0,00%
RUBIA GALLEGA - RG		0,00%		0,00%	0	0,00%
<b>TOTAL</b>	<b>4.583.522</b>	<b>99,91%</b>	<b>315.118</b>	<b>99,82%</b>	<b>4.898.640</b>	<b>100,00%</b>

TOTAL CORTE NACIONAL	4.583.522	93,57%
TOTAL CORTE IMPORTADO	315.118	6,43%
<b>TOTAL CORTE</b>	<b>4.898.640</b>	<b>100,00%</b>

TOTAL CORTE	4.898.640	65,49%
TOTAL LEITE	2.581.909	34,51%
<b>TOTAL GERAL</b>	<b>7.480.549</b>	<b>100,00%</b>

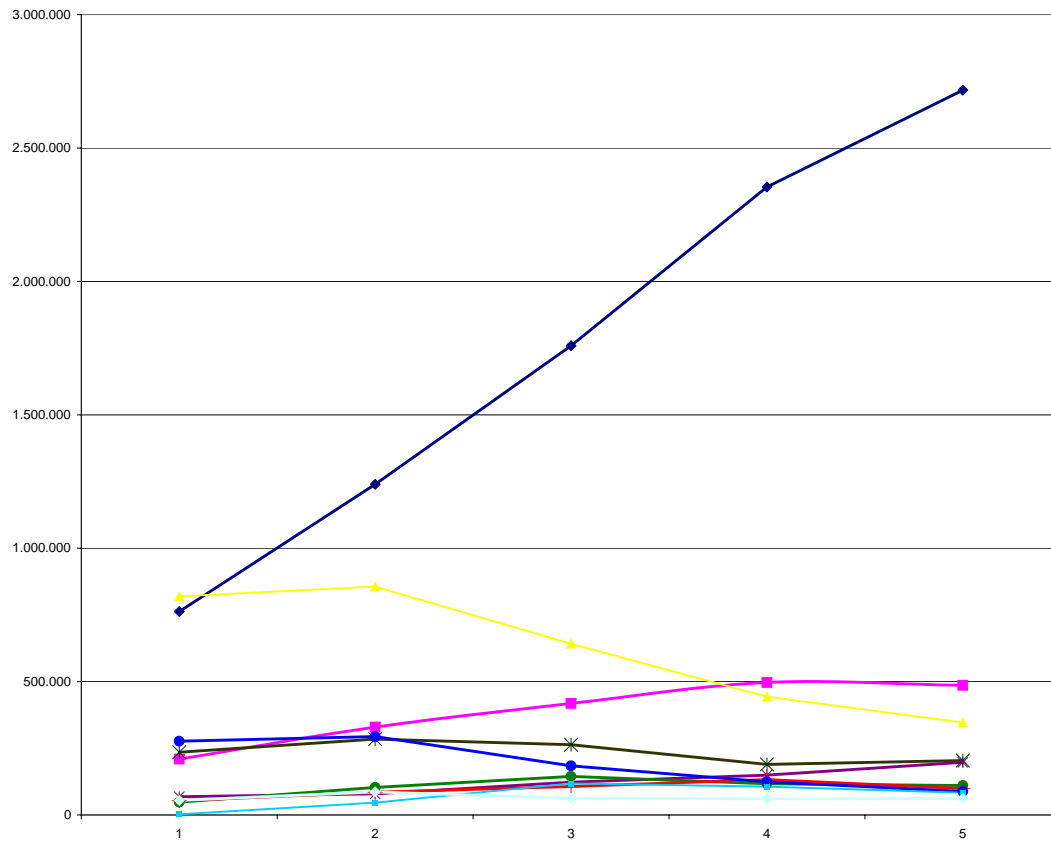
RAÇAS	RAÇAS DE LEITE					
	NACIONAL		IMPORTADO		TOTAL LEITE	
	DOSES	PART %	DOSES	PART %	DOSES	PART %
HOLANDES - HO	228.023	18,89%	1.083.040	78,76%	1.311.063	50,78%
GIR LEITEIRO - GL	574.510	47,61%		0,00%	574.510	22,25%
JERSEY - JE	207.013	17,15%	217.962	15,85%	424.975	16,46%
GIROLANDO - GO	95.068	7,88%		0,00%	95.068	3,68%
GUZERÁ LEITEIRO - GT	59.995	4,97%		0,00%	59.995	2,32%
PARDO SUIÇO LEITE - BS	23.758	1,97%	27.622	2,01%	51.380	1,99%
HOLANDES VERMELHO - WW	3.728	0,31%	44.704	3,25%	48.432	1,88%
GIR LEITEIRO MOCHO - GH	13.773	1,14%		0,00%	13.773	0,53%
AYRSHIRE - AY		0,00%	1.435	0,10%	1.435	0,06%
COMPOSTO LEITE - XX	925	0,08%		0,00%	925	0,04%
GUERNSEY - GU		0,00%	353	0,03%	353	0,01%
<b>TOTAL</b>	<b>1.206.793</b>	<b>100,00%</b>	<b>1.375.116</b>	<b>100,00%</b>	<b>2.581.909</b>	<b>100,00%</b>

TOTAL LEITE NACIONAL	1.206.793	46,74%
TOTAL LEITE IMPORTADO	1.375.116	53,26%
<b>TOTAL LEITE</b>	<b>2.581.909</b>	<b>100,00%</b>

TOTAL NACIONAL	5.790.315	77,40%
TOTAL IMPORTADO	1.690.234	22,60%
<b>TOTAL GERAL</b>	<b>7.480.549</b>	<b>100,00%</b>



Evolução das raças mais vendidas - corte



- NELORE - NE
- NELORE MOCHO - NO
- RED ANGUS - AR
- ANGUS - AN
- BRAHMAN - BR
- GUZERÁ - GZ
- TABAPUÃ - TB
- SIMENTAL - SM
- SENEPOL - SE
- BRANGUS - BN

EVOLUÇÃO RAÇAS DE LEITE 2000 - 2004



RAÇAS	NACIONAL					IMPORTADO					TOTAL GERAL					EVOL % 03-04	EVOL % 00-04
	2000	2001	2002	2003	2004	2000	2001	2002	2003	2004	2000	2001	2002	2003	2004		
HOLANDÊS - HO	355.080	438.648	321.579	297.716	228.023	1.334.329	1.260.452	1.123.088	1.108.298	1.083.040	1.689.409	1.699.100	1.444.667	1.406.014	1.311.063	-6,75%	-22,40%
GIR LEITEIRO - GL	194.325	310.891	406.503	537.386	574.510	180.290	213.690	174.195	167.069	217.962	194.325	310.891	406.503	537.386	574.510	6,91%	195,64%
JERSEY - JE	130.609	158.124	192.260	257.543	207.013						310.899	371.814	366.455	424.612	424.975	0,09%	36,69%
GIROLANDO - GO	17.516	43.924	48.959	64.810	95.068						17.516	43.924	48.959	64.810	95.068	46,69%	442,75%
GUZERÁ LEITEIRO - GT	26.366	30.988	27.770	36.187	59.995						26.366	30.988	27.770	36.187	59.995	65,79%	127,55%
PARDO SUIÇO LEITE - BS	51.294	31.788	29.355	40.865	23.758	30.817	32.313	31.038	38.986	27.622	82.111	64.101	60.393	79.851	51.380	-35,66%	-37,43%
HOLANDÊS VERMELHO - WW	2.385	341	60	3.940	3.728	12.902	18.704	13.057	13.724	44.704	15.287	19.045	13.117	17.664	48.432	174,18%	216,82%
GIR LEITEIRO MOCHO - GH	1.487	6.012	3.542	8.357	13.773						1.487	6.012	3.542	8.357	13.773	64,81%	826,23%
AYRSHIRE - AY									1.371	1.435				1.371	1.435	4,67%	
COMPOSTO LEITE - XX				505	925									505	925	83,17%	
GUERNSEY - GU									298	353				298	353	18,46%	
OUTRAS*	140	150	0			0	200	1.070			140	350	1.070	0	0		-100,00%
<b>TOTAL LEITE</b>	<b>779.202</b>	<b>1.020.866</b>	<b>1.030.028</b>	<b>1.247.309</b>	<b>1.206.793</b>	<b>1.558.338</b>	<b>1.525.359</b>	<b>1.342.448</b>	<b>1.329.746</b>	<b>1.375.116</b>	<b>2.337.540</b>	<b>2.546.225</b>	<b>2.372.476</b>	<b>2.577.055</b>	<b>2.581.909</b>	<b>0,19%</b>	<b>10,45%</b>
<b>EVOLUÇÃO %</b>	<b>11,38%</b>	<b>31,01%</b>	<b>0,90%</b>	<b>21,09%</b>	<b>-3,25%</b>	<b>-9,31%</b>	<b>-2,12%</b>	<b>-11,99%</b>	<b>-0,95%</b>	<b>3,41%</b>	<b>-3,32%</b>	<b>8,93%</b>	<b>-6,82%</b>	<b>8,62%</b>	<b>0,19%</b>		
<b>TOTAL CORTE</b>	<b>2.514.708</b>	<b>3.548.096</b>	<b>4.131.413</b>	<b>4.466.234</b>	<b>4.583.522</b>	<b>917.100</b>	<b>775.769</b>	<b>572.672</b>	<b>429.970</b>	<b>315.118</b>	<b>3.431.808</b>	<b>4.323.865</b>	<b>4.704.085</b>	<b>4.896.204</b>	<b>4.898.640</b>		
<b>EVOLUÇÃO %</b>	<b>10,27%</b>	<b>41,09%</b>	<b>16,44%</b>	<b>8,10%</b>	<b>2,63%</b>	<b>5,44%</b>	<b>-15,41%</b>	<b>-26,18%</b>	<b>-24,92%</b>	<b>-26,71%</b>	<b>8,94%</b>	<b>25,99%</b>	<b>8,79%</b>	<b>4,08%</b>	<b>0,05%</b>		
<b>TOTAL</b>	<b>3.293.910</b>	<b>4.568.962</b>	<b>5.161.441</b>	<b>5.713.543</b>	<b>5.790.315</b>	<b>2.475.438</b>	<b>2.301.128</b>	<b>1.915.120</b>	<b>1.759.716</b>	<b>1.690.234</b>	<b>5.769.348</b>	<b>6.870.090</b>	<b>7.076.561</b>	<b>7.473.259</b>	<b>7.480.549</b>		
<b>EVOLUÇÃO %</b>	<b>10,53%</b>	<b>38,71%</b>	<b>12,97%</b>	<b>10,70%</b>	<b>1,34%</b>	<b>-4,35%</b>	<b>-7,04%</b>	<b>-16,77%</b>	<b>-8,11%</b>	<b>-3,95%</b>	<b>3,61%</b>	<b>19,08%</b>	<b>3,01%</b>	<b>5,61%</b>	<b>0,10%</b>		
<b>TOTAL LEITE</b>	2.337.540	2.546.225	2.372.476	2.577.055	2.581.909	<b>TOTAL NACIONAL</b>					3.293.910	4.568.962	5.161.441	5.713.543	5.790.315		
<b>TOTAL CORTE</b>	3.431.808	4.323.865	4.704.085	4.896.204	4.898.640	<b>TOTAL IMPORTADO</b>					2.475.438	2.301.128	1.915.120	1.759.716	1.690.234		
<b>TOTAL GERAL</b>	5.769.348	6.870.090	7.076.561	7.473.259	7.480.549	<b>TOTAL GERAL</b>					5.769.348	6.870.090	7.076.561	7.473.259	7.480.549		

\* Algumas raças não tem histórico anterior a 2003 pois estavam em "Outras"

