



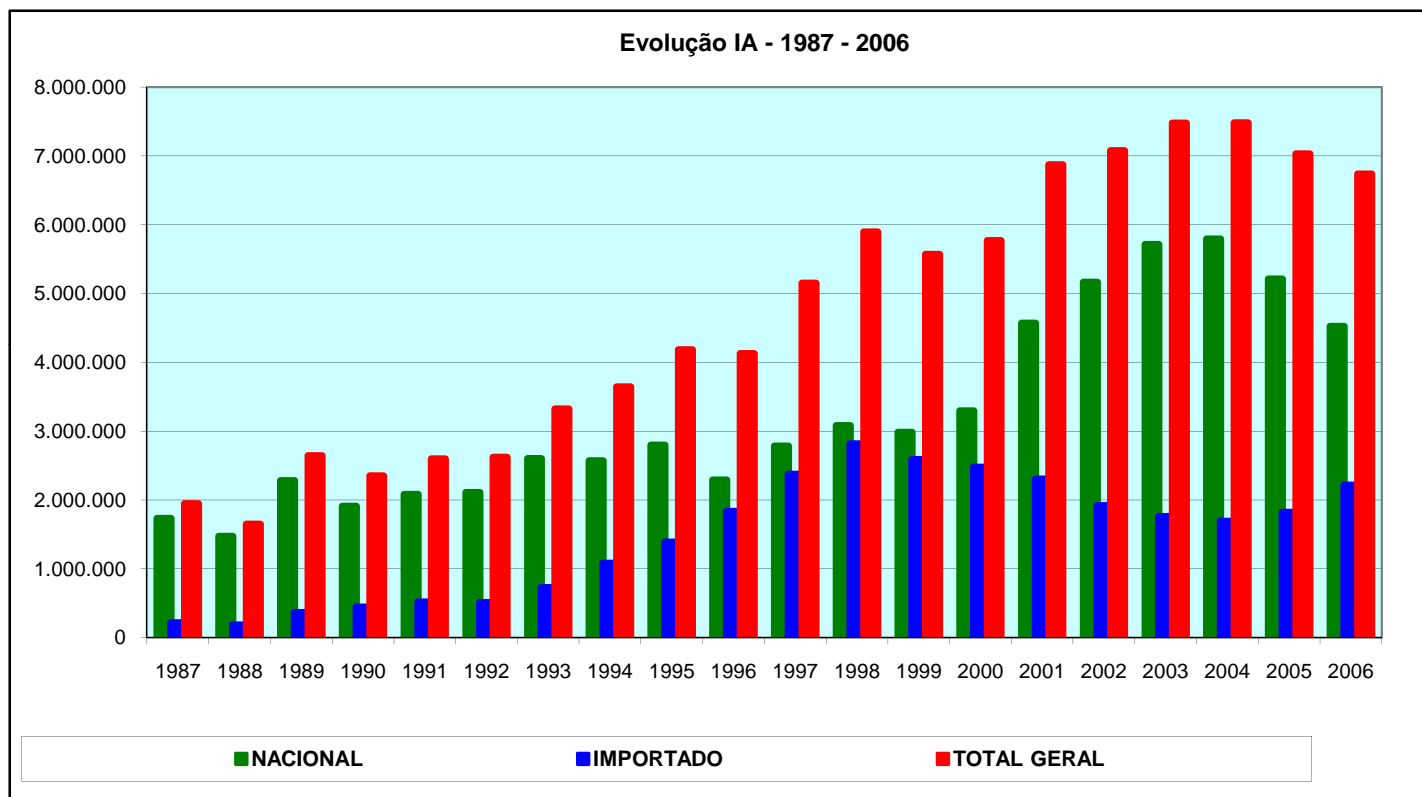
RELATÓRIO ESTATÍSTICO DE  
PRODUÇÃO, IMPORTAÇÃO E  
COMERCIALIZAÇÃO DE SÊMEN

**2006**

## EVOLUÇÃO DA INSEMINAÇÃO ARTIFICIAL NO BRASIL Nacional e Importado - Período de 1987 - 2006



Ano	NACIONAL			IMPORTADO			TOTAL GERAL	
	VENDAS	PART %	EVOL %	VENDAS	PART %	EVOL %	VENDAS	EVOL %
1987	1.731.683	89,09%	14,29%	212.032	10,91%	-18,81%	1.943.715	9,42%
1988	1.467.825	89,03%	-15,24%	180.929	10,97%	-14,67%	1.648.754	-15,18%
1989	2.280.054	86,33%	55,34%	361.019	13,67%	99,54%	2.641.073	60,19%
1990	1.906.231	81,15%	-16,40%	442.800	18,85%	22,65%	2.349.031	-11,06%
1991	2.080.086	80,08%	9,12%	517.582	19,92%	16,89%	2.597.668	10,58%
1992	2.108.245	80,55%	1,35%	509.036	19,45%	-1,65%	2.617.281	0,76%
1993	2.597.933	78,21%	23,23%	723.597	21,79%	42,15%	3.321.530	26,91%
1994	2.566.457	70,43%	-1,21%	1.077.431	29,57%	48,90%	3.643.888	9,71%
1995	2.797.063	66,90%	8,99%	1.383.908	33,10%	28,45%	4.180.971	14,74%
1996	2.288.672	55,50%	-18,18%	1.834.770	44,50%	32,58%	4.123.442	-1,38%
1997	2.779.413	53,96%	21,44%	2.371.013	46,04%	29,23%	5.150.426	24,91%
1998	3.079.066	52,26%	10,78%	2.813.309	47,74%	18,65%	5.892.375	14,41%
1999	2.980.091	53,52%	-3,21%	2.588.103	46,48%	-8,01%	5.568.194	-5,50%
2000	3.293.910	57,09%	10,53%	2.475.438	42,91%	-4,35%	5.769.348	3,61%
2001	4.568.962	66,51%	38,71%	2.301.128	33,49%	-7,04%	6.870.090	19,08%
2002	5.161.441	72,94%	12,97%	1.915.120	27,06%	-16,77%	7.076.561	3,01%
2003	5.713.543	76,45%	10,70%	1.759.716	23,55%	-8,11%	7.473.259	5,61%
2004	5.790.315	77,40%	1,34%	1.690.234	22,60%	-3,95%	7.480.549	0,10%
2005	5.210.566	74,14%	-10,01%	1.817.742	25,86%	7,54%	7.028.308	-6,05%
2006	4.519.473	67,10%	-13,26%	2.215.731	32,90%	21,89%	6.735.204	-4,17%
	<b>NACIONAL</b>			<b>IMPORTADO</b>			<b>TOTAL</b>	
<b>Evolução últimos 20 anos</b>	<b>160,99%</b>			<b>945,00%</b>			<b>246,51%</b>	



## EVOLUÇÃO DA INSEMINAÇÃO ARTIFICIAL NO BRASIL

### Corte e Leite - Período de 1997 - 2006



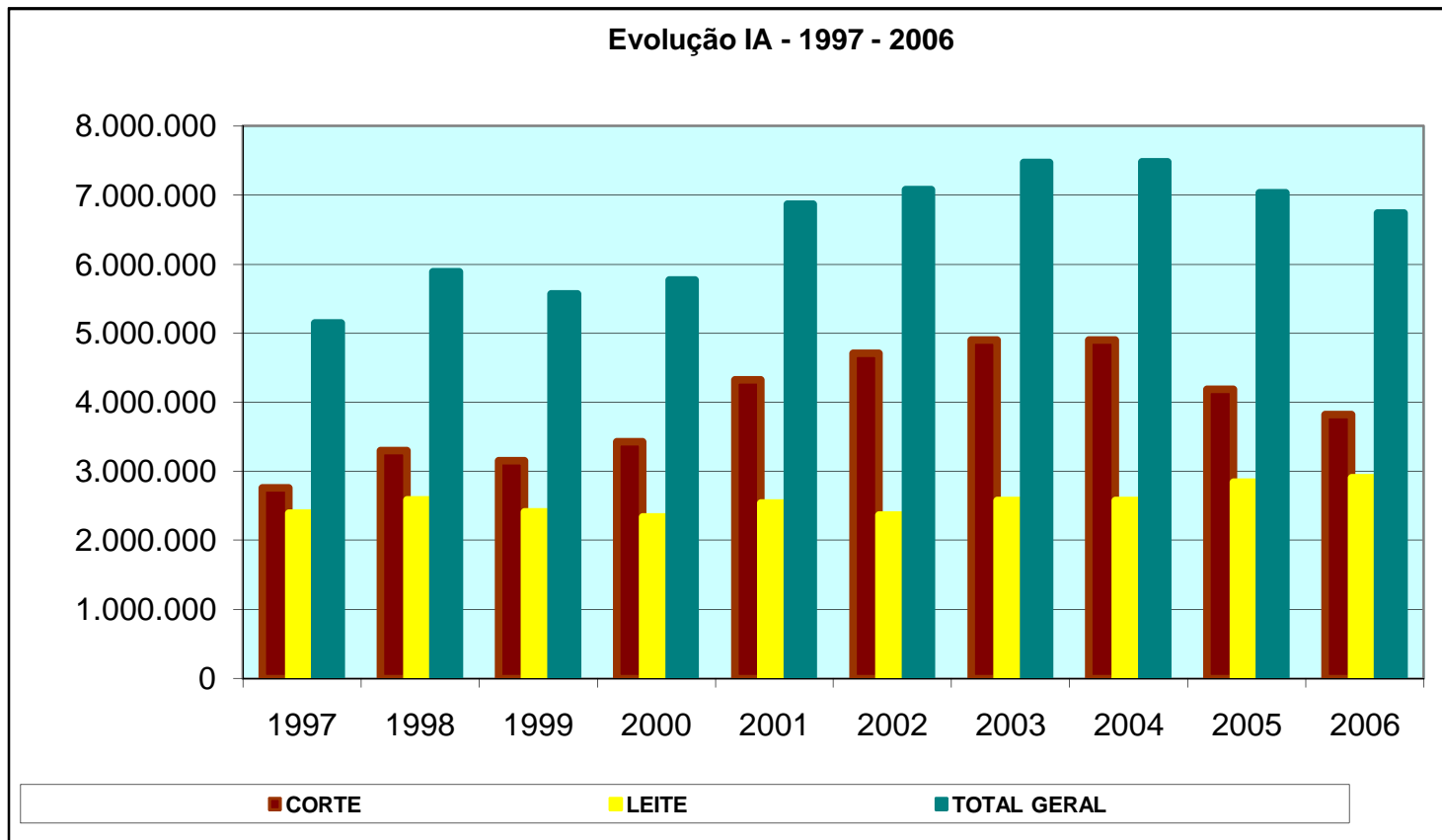
Ano	CORTE			LEITE			TOTAL GERAL	
	VENDAS	PART %	EVOL %	VENDAS	PART %	EVOL %	VENDAS	EVOL %
1997	2.757.042	53,53%	39,29%	2.393.384	46,47%	11,62%	5.150.426	24,91%
1998	3.303.281	56,06%	19,81%	2.589.094	43,94%	8,18%	5.892.375	14,41%
1999	3.150.308	56,58%	-4,63%	2.417.886	43,42%	-6,61%	5.568.194	-5,50%
2000	3.431.808	59,48%	8,94%	2.337.540	40,52%	-3,32%	5.769.348	3,61%
2001	4.323.865	62,94%	25,99%	2.546.225	37,06%	8,93%	6.870.090	19,08%
2002	4.704.085	66,47%	8,79%	2.372.476	33,53%	-6,82%	7.076.561	3,01%
2003	4.896.204	65,52%	4,08%	2.577.055	34,48%	8,62%	7.473.259	5,61%
2004	4.898.640	65,49%	0,05%	2.581.909	34,51%	0,19%	7.480.549	0,10%
2005	4.183.141	59,52%	-14,61%	2.845.167	40,48%	10,20%	7.028.308	-6,05%
2006	3.825.037	56,79%	-8,56%	2.910.167	43,21%	2,28%	6.735.204	-4,17%

38,74%

21,59%

30,77%

Evolução Últimos Dez anos



COMERCIALIZAÇÃO DE SÊMEN 2006

RAÇAS DE CORTE E LEITE - NACIONAL E IMPORTADO



RAÇAS	RAÇAS DE CORTE					
	NACIONAL		IMPORTADO		TOTAL CORTE	
	DOSES	PART %	DOSES	PART %	DOSES	PART %
NELORE - NE	1.917.879	55,56%			1.917.879	50,14%
NELORE MOCHO - NO	270.364	7,83%			270.364	7,07%
RED ANGUS - AR	260.896	7,56%	95.853	25,71%	356.749	9,33%
ANGUS - AN	100.633	2,92%	156.024	41,85%	256.657	6,71%
BRAHMAN - BR	168.206	4,87%	19.192	5,15%	187.398	4,90%
GUZERÁ - GZ	145.745	4,22%			145.745	3,81%
TABAPUÁ - TB	75.148	2,18%			75.148	1,96%
SIMENTAL - SM	83.438	2,42%	16.427	4,41%	99.865	2,61%
SENEPOL - SE	35.720	1,03%	20.891	5,60%	56.611	1,48%
BRANGUS - BN	23.115	0,67%	5.355	1,44%	28.470	0,74%
BONSMARA - NS	29.380	0,85%	804	0,22%	30.184	0,79%
RED BRANGUS - RB	62.044	1,80%	1.759	0,47%	63.803	1,67%
HEREFORD MOCHO - HP	35.601	1,03%	16.070	4,31%	51.671	1,35%
BRAFORD - BO	36.861	1,07%	6.566	1,76%	43.427	1,14%
COMPOSTO - XX	3.397	0,10%	309	0,08%	3.706	0,10%
LIMOUSIN - LM	22.023	0,64%	6.787	1,82%	28.810	0,75%
BRAUNVIEH - BU	9.880	0,29%	1.161	0,31%	11.041	0,29%
CHAROLÉS - CH	8.721	0,25%	15.330	4,11%	24.051	0,63%
CANCHIM - CC	16.564	0,48%			16.564	0,43%
CHAROLÉS MOCHO - CO	8.251	0,24%	889	0,24%	9.140	0,24%
CARACU - CR	11.416	0,33%			11.416	0,30%
MONTANA - MN	14.156	0,41%			14.156	0,37%
SIMBRASIL - SI	4.148	0,12%	10		4.158	0,11%
MARCHIGIANA - MR	6.844	0,20%			6.844	0,18%
PIEMONTÉS - PI	5.225	0,15%			5.225	0,14%
SANTA GERTRUDIS - SG	16.338	0,47%	406	0,11%	16.744	0,44%
BLONDE D'AQUITAINE - BD	2.077	0,06%	659	0,18%	2.736	0,07%
HEREFORD - HH	490	0,01%	4.120	1,11%	4.610	0,12%
INDUBRASIL - IB	24.773	0,72%			24.773	0,65%
DEVON - DE	3.261	0,09%			3.261	0,09%
LIMOUSIN MOCHO - LP	2.429	0,07%			2.429	0,06%
SIMENTAL MOCHO - SP	17.404	0,50%			17.404	0,46%
GIR MOCHO - GM	5.648	0,16%			5.648	0,15%
NORMANDO - NM		0,00%	1.651	0,44%	1.651	0,04%
BELGIAN BLUE - BB	542	0,02%			542	0,01%
SENGANGUS - SN			211	0,06%	211	0,01%
SHORTHORN - SS	50		615	0,16%	665	0,02%
MONTBELIARD - MO	109		955	0,26%	1.064	0,03%
GIR - GY	3.793	0,11%			3.793	0,10%
TARENDAISE - TA			325		325	0,01%
KOBE (WAGYU) - KB	1.933	0,06%			1.933	0,05%
GELBVIEH - GV	1.125	0,03%	460	0,12%	1.585	0,04%
PIRENAICO - PR			10		10	
RED POLL - RP	80				80	
TULI - TI	1				1	
MURRAH - UM	14.500	0,42%			14.500	0,38%
SINDI - SD	1.980	0,06%			1.980	0,05%
RED BRAHMA - RR	10				10	
<b>TOTAL</b>	<b>3.452.198</b>	<b>100%</b>	<b>372.839</b>	<b>99,91%</b>	<b>3.825.037</b>	<b>100,00%</b>

TOTAL CORTE NACIONAL	3.452.198	90,25%
TOTAL CORTE IMPORTADO	372.839	9,75%
<b>TOTAL CORTE</b>	<b>3.825.037</b>	<b>100,00%</b>

TOTAL CORTE	3.825.037	56,79%
TOTAL LEITE	2.910.167	43,21%
<b>TOTAL GERAL</b>	<b>6.735.204</b>	<b>100,00%</b>

RAÇAS	RAÇAS DE LEITE					
	NACIONAL		IMPORTADO		TOTAL LEITE	
	DOSES	PART %	DOSES	PART %	DOSES	PART %
HOLANDÉS - HO	177.677	16,65%	1.425.465	77,35%	1.603.142	55,09%
GIR LEITEIRO - GL	552.316	51,75%			552.316	18,98%
JERSEY - JE	162.248	15,20%	374.467	20,32%	536.715	18,44%
GIROLANDO - GO	109.828	10,29%			109.828	3,77%
GUZERÁ LEITEIRO - GT	41.141	3,85%			41.141	1,41%
PARDO SUIÇO LEITE -BS	16.924	1,59%	23.957	1,30%	40.881	1,40%
HOLANDÉS VERMELHO - WW	2.285	0,21%	18.459	1,00%	20.744	0,71%
GIR LEITEIRO MOCHO - GH	3.377	0,32%			3.377	0,12%
AYRSHIRE - AY	30		414	0,02%	444	0,02%
COMPOSTO LEITE - XX	1.429	0,13%			1.429	0,05%
GUERNSEY - GU	20		130	0,01%	150	0,01%
<b>TOTAL</b>	<b>1.067.275</b>	<b>100,00%</b>	<b>1.842.892</b>	<b>100,00%</b>	<b>2.910.167</b>	<b>100,00%</b>

TOTAL LEITE NACIONAL	1.067.275	36,67%
TOTAL LEITE IMPORTADO	1.842.892	63,33%
<b>TOTAL LEITE</b>	<b>2.910.167</b>	<b>100,00%</b>

TOTAL NACIONAL	4.519.473	67,10%
TOTAL IMPORTADO	2.215.731	32,90%
<b>TOTAL GERAL</b>	<b>6.735.204</b>	<b>100,00%</b>

# Relatório 2006

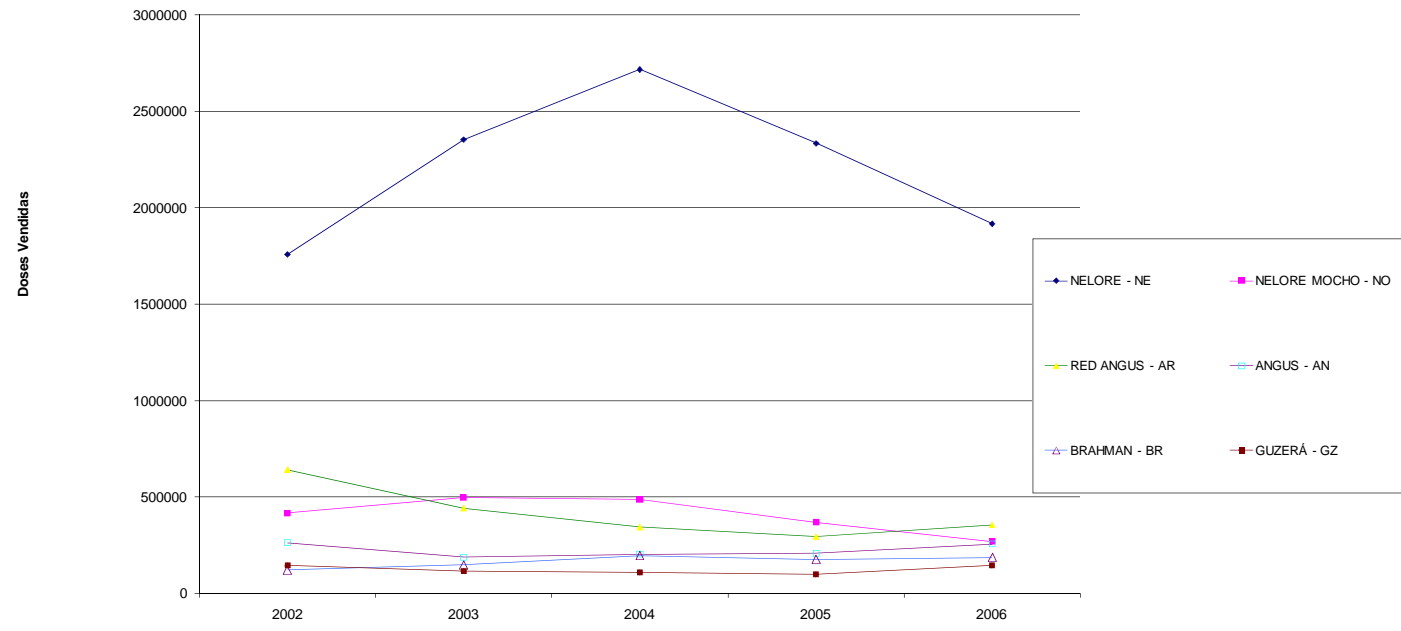
EVOLUÇÃO RAÇAS DE CORTE - Últimos 5 anos



RAÇAS	NACIONAL					IMPORTADO					TOTAL GERAL						
	2002	2003	2004	2005	2006	2002	2003	2004	2005	2006	2002	2003	2004	2005	2006	EVOL % 05-06	EVOL % 02-06
	Doses	Doses	Doses	Doses	Doses	Doses	Doses	Doses	Doses	Doses	Doses	Doses	Doses	Doses	Doses		
NELORE - NE	1.758.958	2.353.772	2.716.648	2.333.983	1.917.879						1.758.958	2.353.772	2.716.648	2.333.983	1.917.879	-17,83%	9,03%
NELORE MOCHO - NO	418.173	496.878	485.967	370.121	270.364						418.173	496.878	485.967	370.121	270.364	-26,95%	-35,35%
RED ANGUS - AR	445.737	327.410	267.720	241.127	260.896	196.112	115.879	78.830	54.515	95.853	641.849	443.289	346.550	295.642	356.749	20,67%	-44,42%
ANGUS - AN	139.412	95.039	105.181	96.861	100.633	123.923	94.405	98.955	111.121	156.024	263.335	189.444	204.136	207.982	256.657	23,40%	-2,54%
BRAHMAN - BR	109.616	128.459	172.720	158.916	168.206	13.132	20.760	24.907	19.379	19.192	122.748	149.219	197.627	178.295	187.398	5,11%	52,67%
GUZERÁ - GZ	144.797	116.825	110.087	99.329	145.745						144.797	116.825	110.087	99.329	145.745	46,73%	0,65%
TABAPUÁ - TB	106.866	132.866	98.797	101.890	75.148						106.866	132.866	98.797	101.890	75.148	-26,25%	-29,88%
SIMENTAL - SM	159.082	99.618	71.877	74.408	83.438	25.222	24.613	16.341	13.009	16.427	184.304	124.231	88.218	87.417	99.865	14,24%	-45,82%
SENEPOL - SE	93.543	91.829	75.772	36.902	35.720	24.542	14.556	7.747	9.758	20.891	118.085	106.385	83.519	46.660	56.611	21,33%	-52,06%
BRANGUS - BN	43.459	52.933	51.694	24.645	23.115	19.072	7.868	9.606	13.410	5.355	62.531	60.801	61.300	38.055	28.470	-25,19%	-54,47%
BONSMARA - NS	87.876	48.166	54.705	35.190	29.380	8.570	4.911	1.030	510	804	96.446	53.077	55.735	35.700	30.184	-15,45%	-68,70%
RED BRANGUS - RB	81.051	65.850	48.474	49.373	62.044	13.001	6.114	2.937	3.376	1.759	94.052	71.964	51.411	52.749	63.803	20,96%	-32,16%
HEREFORD MOCHO - HP	27.129	38.281	28.500	27.241	35.601	25.062	13.847	21.542	8.343	16.070	52.191	52.128	49.592	35.584	51.671	45,21%	-1,00%
BRAFORD - BO	66.563	36.705	40.367	46.847	36.861	3.879	2.319	6.139	6.280	6.566	70.442	39.024	46.506	53.127	43.427	-18,26%	-38,35%
COMPOSTO - XX	5.126	5.046	40.372	4.621	3.397	14.128	2.297	3.410	1.818	309	19.254	7.343	43.782	6.439	3.706	-42,44%	-80,75%
LIMOUSIN - LM	81.973	80.235	33.319	27.573	22.023	36.083	40.938	5.926	5.791	6.787	118.056	121.173	39.245	33.364	28.810	-13,65%	-75,60%
BRAUNVIEH - BU	37.532	34.313	29.067	11.894	9.880	7.113	6.953	2.050	1.822	1.161	44.645	41.266	31.117	13.716	11.041	-19,50%	-75,27%
CHAROLÉS - CH	46.280	22.176	14.331	8.886	8.721	14.854	19.299	16.728	11.988	15.330	61.134	41.475	31.059	20.874	24.051	15,22%	-60,66%
CANCHIM - CC	15.559	35.175	26.811	20.636	16.564						15.559	35.175	26.811	20.636	16.564	-19,73%	6,46%
CHAROLÉS MOCHO - CO	12.502	20.840	17.231	8.569	8.251	845	1.544	2.315	824	889	13.347	22.384	19.546	9.393	9.140	-2,69%	-31,52%
CARACU - CR	32.673	23.177	12.652	18.883	11.416						32.673	23.177	12.652	18.883	11.416	-39,54%	-65,06%
MONTANA - MN	20.966	26.291	12.316	7.532	14.156						20.966	26.291	12.316	7.532	14.156	87,94%	-32,48%
SIMBRASIL - SI	15.682	14.921	10.814	9.179	4.148		757	112	370	10	15.682	15.678	10.926	9.549	4.158	-56,46%	-73,49%
MARCHIGIANA - MR	24.997	19.945	8.759	9.216	6.844	304	30				25.301	19.975	8.759	9.216	6.844	-25,74%	-72,95%
PIEMONTÉS - PI	5.836	6.119	6.128	2.235	5.225	4.984	3.512	1.191	1.474		10.820	9.631	7.319	3.709	5.225	40,87%	-51,71%
SANTA GERTRUDIS - SG	28.998	22.300	7.173	11.694	16.338	20	11	55	1.020	406	29.018	22.311	7.228	12.714	16.744	31,70%	-42,30%
BLONDE D'AQUITAINE - BD	17.964	15.583	4.708	4.374	2.077	10.625	32.294	1.942	936	659	28.589	47.877	6.650	5.310	2.736	-48,47%	-90,43%
HEREFORD - HH	11.417	3.537	2.660	8.988	490	10.763	6.592	3.731	4.389	4.120	22.180	10.129	6.391	13.377	4.610	-65,54%	-79,22%
INDUBRASIL - IB	12.834	9.169	6.286	10.873	24.773						12.834	9.169	6.286	10.873	24.773	127,84%	93,03%
DEVON - DE	3.417	4.977	4.896	2.977	3.261	1.089					4.506	4.977	4.896	2.977	3.261	9,54%	-27,63%
LIMOUSIN MOCHO - LP	6.477	4.247	4.378	2.116	2.429	61					6.538	4.247	4.378	2.116	2.429	14,79%	-62,85%
SIMENTAL MOCHO - SP	9.615	3.496	3.900	15.118	17.404						9.615	3.496	3.900	15.118	17.404	15,12%	81,01%
GIR MOCHO - GM	6.372	2.771	3.547	3.459	5.648						6.372	2.771	3.547	3.459	5.648	63,28%	-11,36%
NORMANDO - NM			90	100		1.600	2.145	3.074	3.198	1.651	1.600	2.145	3.164	3.298	1.651	-49,94%	3,19%
BELGIAN BLUE - BB	4.266	7.011	1.844	1.073	542	661	342	730			4.927	7.353	2.574	1.073	542	-49,49%	-89,00%
PITANGUEIRAS - PT		1.171	2.095									1.171	2.095				
SEANGUS - SN		200		5.379		2.613	1.743	1.290	110	211	2.613	1.943	1.290	5.489	211	-96,16%	-91,92%
SHORTHORN - SS				50			1.010	1.270	85	615		1.010	1.270	85	665	682,35%	
MONTBELIARD - MO		55	85	240	109	1.026	1.225	1.085	1.078	955	1.026	1.280	1.170	1.318	1.064	-19,27%	3,70%
GIR - GY	43.644	14.125	811	4.620	3.793						43.644	14.125	811	4.620	3.793	-17,90%	-91,31%
AUBRAC - AU							5	577				5	577				
TARENTEISE - TA							150	557	10	325		150	557	10	325	3150,00%	
PARTHENAISE - PA							75	497	50			75	497	50			
KOBE (WAGYU) - KB			450	190	1.933		6					6	450	190	1.933	917,37%	
GELBVIEH - GV	510	2.141	240	241	1.125	244	281	150	60	460	754	2.422	390	301	2.585	426,58%	110,21%
CHIANNINA - CA	491	2.016	130	21		563	808	122	30		1.054	2.824	252	51			
PIRENAICO - PR							174	175		10		174	175		10		
RED POLL - RP		205	140	68	80		40					245	140	68	80	17,65%	
TULI - TI	3.002	361	140	653	1	30	2				3.032	363	140	653	1	-99,85%	-99,97%
SANTA GERTRUDIS MOCHO - SO			90										90				
GASCONE - GS							94	57				94	57				
FLAMENGA - FA				635			20	40	54			20	40	689			
BEEFMASTER - BM						1.813					1.813	0					
BELMONT RED - BT				4.095		7.968	770				7.968	770		4.095			
GALLOWAY - GA							1					1					
RUBIA GALLEGA - RG							1.580					1.580					
MURRAH				4.729	14.500									4.729	14.500	206,62%	
SINDI				478	1.980									478	1.980	314,23%	
RED BRAHMA				20	10				80					100	10	-90,00%	
SOUTH DEVON				17										17			
OUTRAS *	1.018			38		2.770					3.788			38			

TOTAL CORTE	4.131.413	4.466.234	4.583.522	3.908.253	3.452.198	572.672	429.970	315.118	274.888	372.839	4.704.085	4.896.204	4.898.640	4.183.141	3.825.037	-8,56%	-3,25%
EVOLUÇÃO %	16,44%	8,10%	2,63%	-14,73%	-0,1166902	-26,18%	-24,92%	-26,71%	-12,77%	35,63%	8,79%	4,08%	0,05%	-14,61%	-8,56%		
TOTAL LEITE	1.030.028	1.247.309	1.206.793	1.302.313	1.067.275	1.342.448	1.329.746	1.375.116	1.542.854	1.842.892	2.372.476	2.577.055	2.581.909	2.845.167	2.910.167		
EVOLUÇÃO %	0,90%	21,09%	-3,25%	7,92%	-0,1804774	-11,99%	-0,95%	3,41%	12,20%	19,45%	-6,82%	8,62%	0,19%	10,20%	2,28%		
TOTAL	5.161.441	5.713.543	5.790.315	5.210.566	4.519.473	1.915.120	1.759.716	1.690.234	1.817.742	2.215.731	7.076.561	7.473.259	7.480.549	7.028.308	6.735.204		
EVOLUÇÃO %	12																

Evolução das Raças de Corte mais Vendidas - últimos 5 anos





# Relatório 2006

RAÇAS	NACIONAL					IMPORTADO					TOTAL GERAL					EVOL % 05-06	EVOL % 02-06
	2002	2003	2004	2005	2006	2002	2003	2004	2005	2006	2002	2003	2004	2005	2006		
HOLANDÊS - HO	321.579	297.716	228.023	230.622	177.677	1.123.088	1.108.298	1.083.040	1.200.742	1.425.465	1.444.667	1.406.014	1.311.063	1.431.364	1.603.142	12,00%	10,97%
GIR LEITEIRO - GL	406.503	537.386	574.510	659.596	552.316	174.195	167.069	217.962	293.623	374.467	406.503	537.386	574.510	659.596	552.316	-16,26%	35,87%
JERSEY - JE	192.260	257.543	207.013	206.692	162.248	31.038	38.986	27.622	26.356	23.957	366.455	424.612	424.975	500.315	536.715	7,28%	46,46%
GIROLANDO - GO	48.959	64.810	95.068	116.041	109.828	13.057	13.724	44.704	20.222	18.459	48.959	64.810	95.068	116.041	109.828	-5,35%	124,33%
GUZERÁ LEITEIRO - GT	27.770	36.187	59.995	61.530	41.141	13.117	17.664	48.432	24.377	20.744	27.770	36.187	59.995	61.530	41.141	-33,14%	48,15%
PARDO SUIÇO LEITE - BS	29.355	40.865	23.758	18.747	16.924	3.542	8.357	13.773	3.385	3.377	60.393	79.851	51.380	45.103	40.881	-9,36%	-32,31%
HOLANDÊS VERMELHO - WW	60	3.940	3.728	4.155	2.285	0	0	0	0	0	13.117	17.664	48.432	24.377	20.744	-14,90%	58,15%
GIR LEITEIRO MOCHO - GH	3.542	8.357	13.773	3.385	3.377	0	0	0	0	0	3.542	8.357	13.773	3.385	3.377	-0,24%	-4,66%
AYRSHIRE - AY					30												
COMPOSTO LEITE - XX		505	925	1.545	1.429												
GUERNSEY - GU					20												
OUTRAS*	0					1.070	298	353	337	130	1.070	298	353	337	150		
<b>TOTAL LEITE</b>	<b>1.030.028</b>	<b>1.247.309</b>	<b>1.206.793</b>	<b>1.302.313</b>	<b>1.067.275</b>	<b>1.342.448</b>	<b>1.329.746</b>	<b>1.375.116</b>	<b>1.542.854</b>	<b>1.842.892</b>	<b>2.372.476</b>	<b>2.577.055</b>	<b>2.581.909</b>	<b>2.845.167</b>	<b>2.910.167</b>	2,28%	11,74%
<b>EVOLUÇÃO %</b>	<b>0,90%</b>	<b>21,09%</b>	<b>-3,25%</b>	<b>7,92%</b>	<b>-18,05%</b>	<b>-11,99%</b>	<b>-0,95%</b>	<b>3,41%</b>	<b>12,20%</b>	<b>19,45%</b>	<b>-6,82%</b>	<b>8,62%</b>	<b>0,19%</b>	<b>10,20%</b>	<b>2,28%</b>		
<b>TOTAL CORTE</b>	<b>4.131.413</b>	<b>4.466.234</b>	<b>4.583.522</b>	<b>3.908.253</b>	<b>3.452.198</b>	<b>572.672</b>	<b>429.970</b>	<b>315.118</b>	<b>274.888</b>	<b>372.839</b>	<b>4.704.085</b>	<b>4.896.204</b>	<b>4.898.640</b>	<b>4.183.141</b>	<b>3.825.037</b>		
<b>EVOLUÇÃO %</b>	<b>16,44%</b>	<b>8,10%</b>	<b>2,63%</b>	<b>-14,73%</b>	<b>-11,67%</b>	<b>-26,18%</b>	<b>-24,92%</b>	<b>-26,71%</b>	<b>-12,77%</b>	<b>35,63%</b>	<b>8,79%</b>	<b>4,08%</b>	<b>0,05%</b>	<b>-14,61%</b>	<b>-8,56%</b>		
<b>TOTAL</b>	<b>5.161.441</b>	<b>5.713.543</b>	<b>5.790.315</b>	<b>5.210.566</b>	<b>4.519.473</b>	<b>1.915.120</b>	<b>1.759.716</b>	<b>1.690.234</b>	<b>1.817.742</b>	<b>2.215.731</b>	<b>7.076.561</b>	<b>7.473.259</b>	<b>7.480.549</b>	<b>7.028.308</b>	<b>6.735.204</b>		
<b>EVOLUÇÃO %</b>	<b>12,97%</b>	<b>10,70%</b>	<b>1,34%</b>	<b>-10,01%</b>	<b>-13,26%</b>	<b>-16,77%</b>	<b>-8,11%</b>	<b>-3,95%</b>	<b>7,54%</b>	<b>21,89%</b>	<b>3,01%</b>	<b>5,61%</b>	<b>0,10%</b>	<b>-6,05%</b>	<b>-4,17%</b>		

\* Algumas raças não tem histórico anterior a 2003 pois estavam em "Outras"

